



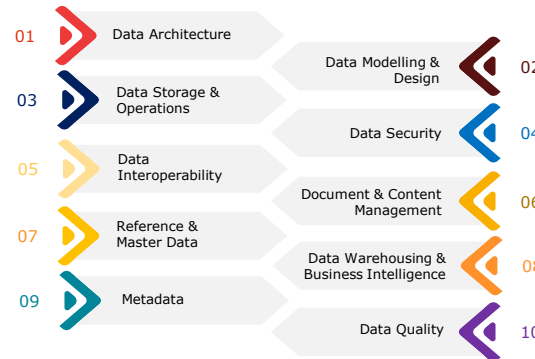
"Data are just summaries of thousands of stories – tell a few of those stories to help make the data meaningful." Those who evolve over time tend to be the best".



What is Data Management?

- Data Management is primarily a **decision making and oversight process** that **prioritizes investments, allocates resources** and **measures results** to ensure that data is being leveraged to support **business needs** and **objectives**.
- It enables organizations to operate in a well organized **data-driven environment**. Implementing a **comprehensive data strategy**, and introducing **appropriate policies and procedures**, results in **higher efficiency** and **desired outcomes**.
- It is about **aligning data** with the organizations **overall strategy**, to optimize results, **control risks** and get a better understanding of present and future **business developments**.
- Data Management consists of **10 interdependent spheres** that play a **significant role** in assuring the basis for **operational success**.

10 Spheres of Data Management



Main Challenges



Strategic

- Finding a **data management strategy** that fits your needs and objectives
- Choosing the **correct model** to match your **business goals**



Commercial & Legal

- Adherence** to laws and regulations
- Compliant** with company policies
- GDPR compliance** with sensitive customer data



Cultural

- Disruptive changes to the **work the environment could** initially result in **loss of productivity**
- Adherence** to data governance policies by the employees



Operational

- Inefficiencies** caused by inconsistent data and difficulties accessing critical data
- Insufficient** or non-existent flow of data between **applications and business units**

How we contribute

- Provide critical **experts** from a **single source**, such as business analysts, enterprise architects and data engineers
- Analysis and assessment** of your organizations current data management structure and governance
- Requirement engineering** by conducting interviews and workshops with relevant stakeholders to identify strengths and possible gaps in your data management structure
- Evaluate existing data**, develop **architecture specifications** and develop a **road map** for implementation
- Involvement of technical experts to advise on matching **data strategies** with fitting **technical solutions**
- Technical implementation** of the planned strategy involving **development and quality control**
- Post production **maintenance**, and adaption to **new developments and trends**



Skilled



Down-to-earth



Versatile



At the forefront



Polyglot

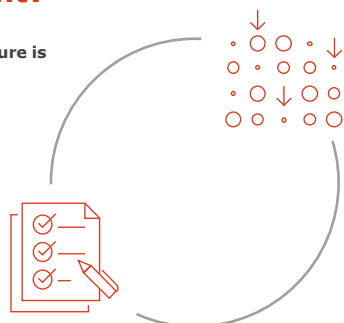


Flexible

Why Data Management?

A stable **data foundation** and **infrastructure** is **important** to implement sound business processes and successful operations in a **functional work environment**.

Organizing and combining the **several dimensions of data management** ensure the optimization of **interdependences** between **applications** and different **business units**



Approach

1 Strategy

Data Architecture

- In-depth analysis to identify the needs of the organization and a blueprint that fits the needs and objectives
- Facilitating business decisions on investments and aligning the technology to the data strategy

Data Modelling & Design

- The process of discovering, analyzing and scoping data requirements
- Representing and communicating requirements in a precise form called the data model

4 Organisation

Document & Content Management

- Lifecycle Management organizes data from its initial creation to the archiving period up until its deletion date
- The documentation, storage- and legal requirements form the basis of document & content management

Metadata & Data Quality

- The planning and implementation to enable high quality integrated metadata, i.e. defining a standard of business terms.
- The control of activities that apply quality management to assure it is fit for consumption

2 Operations

Data Storage & Operations

- The design, implementation and support of stored data to maximize its value and availability
- Improving the integrity and performance of data transactions.

Data Interoperability (Applications)

- Managing the movement and consolidation of data between applications and business units
- Managing shared data to meet organizational goals, reduce risks, redundancy, ensure higher quality reduce costs.

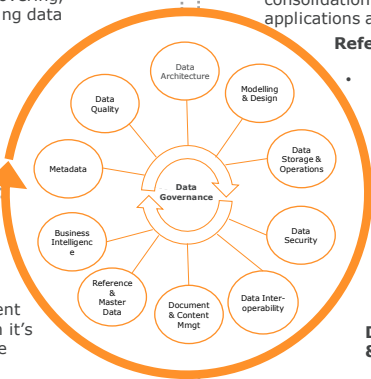
Reference & Master Data

- Managing shared data to meet organizational goals, reduce risks, redundancy, ensure higher quality reduce costs.

3 Analytics

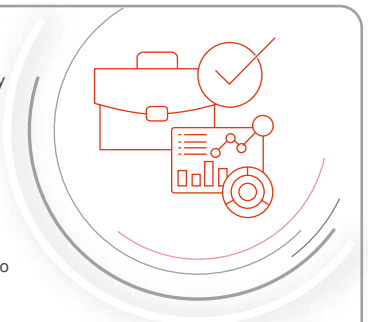
Data Warehousing & Business Intelligence

- The collection, structuring and presentation of decision making data
- Data warehousing technology (ETL), it allows data scientists to engage in the query, analysis and reporting of business intelligence.
- Building and maintaining of the technical environment and business processes needed to deliver structured data in support of operational functions and compliance requirements



Deliverables

- A **detailed documented assessment** of all the managed data and its governance currently in place in the organization
- A **documented strategy** for the transformation of the organizations **data management** in the areas in need of improvement.
- An **implementation roadmap** including the **fitting technologies** and **qualified experts** to implement the **data management strategy**.
- Quality assurance** through testing and seamless **migration** of the new **data management system**



By making **data management a priority** in your organization, you are ensuring that **your data is in a secure place** and available when your business users need it. This **benefits your daily operations** by enabling the following:

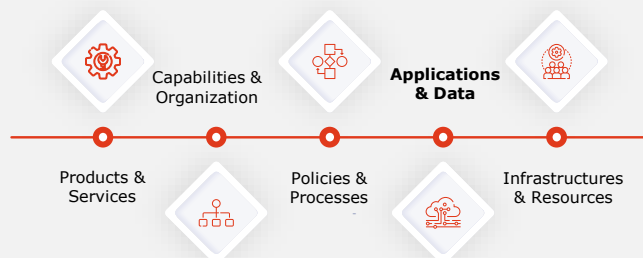


Benefits

- Better visibility & accessibility** of data through documentation & content management
- Improved Quality** of data to increase overall efficiency and communications
- Enhanced Security** of data to minimize external threats
- Higher efficiency** through Interoperability of data flow between applications and departments
- Smarter decision making** by utilizing advanced analytics to measure present and future scenarios



Digital Transformation Strategies



Antonio Gabrielli
Senior Consultant
Antonio.gabrielli@elca.ch
Tel +41 21 555 23 99